

# Kaylinn Clutch

Designed by Isela Phelps

The clutch has always been a timeless accessory, perfect for the special dress in your wardrobe. Worked with simple 4 stitch cables and garter stitch ridges in between.



**Loom:** 52  
peg small  
gauge knitting  
loom. All n  
One Loom by  
KnittingBoard.  
com

**Yarn:** Approx  
80 yards of  
worsted weight  
yarn. Martha  
Stewart Extra  
Soft Wool Blend  
in Bakery Box  
White was used  
in sample

**Notions:** Tapestry needle, curved sewing needle, cable needle, clutch handles (7.5 inches in length).

**Size:** 7.5 inches wide by 5.5 inches in length.

## Abbreviations:

CO=Cast on

BBO=Bind off

K=knit

P=purl stitch

4-st LC=4 stich left cross cable t

sts=stitches

R=Row



## Instructions

CO 52 sts, prepare to work a flat panel. Written instructions below, chart instructions also included for all 52 sts.

R1 : p1, k2, p4, k2, p1, k4, p1, k2, p4, k2, p1, k4, p1, k2, p4, k2, p1, k4, p1, k2, p4, k2, p1

R2 : p1, k2, p4, k2, p1, k4, p1, k2, p4, k2, p1, k4, p1, k2, p4, k2, p1, k4, p1, k2, p4, k2, p1

R3: p1, k8, p1, k4, p1, k8, p1, k4, p1, k8, p1, k4, p1, k8, p1

R4: p1, k8, p1, k4, p1, k8, p1, k4, p1, k8, p1, k4, p1, k8, p1

R5: p1, k2, p4, k2, p1, 4-st LC, p1, k2, p4, k2, p1, 4-st LC, p1, k2, p4, k2, p1, 4-st LC, p1, k2, p4, k2, p1

R6: p1, k2, p4, k2, p1, k4, p1, k2, p4, k2, p1, k4, p1, k2, p4, k2, p1, k4, p1, k2, p4, k2, p1

R7: p1, k8, p1, k4, p1, k8, p1, k4, p1, k8, p1, k4, p1, k8, p1

R8: p1, k8, p1, k4, p1, k8, p1, k4, p1, k8, p1, k4, p1, k8, p1

R9: p1, k2, p4, k2, p1, k4, p1, k2, p4, k2, p1, k4, p1, k2, p4, k2, p1, k4, p1, k2, p4, k2, p1

R10: p1, k2, p4, k2, p1, k4, p1, k2, p4, k2, p1, k4, p1, k2, p4, k2, p1, k4, p1, k2, p4, k2, p1

R11: p1, k8, p1, 4-st LC, p1, k8, p1, 4-st LC, p1, k8, p1, 4-st LC, p1, k8, p1

R12: p1, k8, p1, k4, p1, k8, p1, k4, p1, k8, p1, k4, p1, k8, p1

Rep R1-R12: 5 more times or until piece measures 11 inches from cast on edge or desired length.

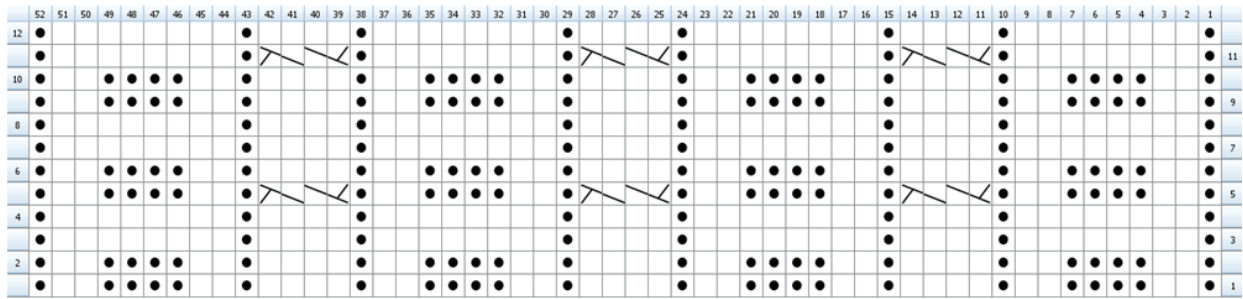
BBO, leave a 20 inch yarn tail.

Fold the panel in half. Using the yarn tail, mattress stitch seam along the sides, leaving a 1 inch opening at the top.

### FINISHING

Thread the curved needle with yarn; sew the top edge of the panel onto the handle. Tip: Use a pointy object, like a pair of blunt scissors (kid's scissors) to insert the knitted fabric's edge inside the small metal lip of the clutch handle. Weave all ends in and steam block.





Legend:

purl 

knit 

4-stLC 

### 4-st LC=4 Stitch Left Cross Cable

Completed over 4 pegs, numbered 1-4 from right to left.

Step 1: Skip pegs 1 and 2.

Step 2: knit pegs 3 and 4.

Step 3: Place stitches from pegs 3 and 4 onto a cable needle and place the cable needle towards the center of the loom.

Step 4: Knit pegs 1 and 2.

Step 5: Move the stitches from pegs 1 and 2 as follows: loop from peg 2 onto peg 4, loop from peg 1 onto peg 3.

Step 6: Place the loops waiting on the cable needle onto pegs 1 and 2 (be sure that the loop that was on peg 4 originally ends on peg 2 and loop that was on peg 3 ends on peg 2).

Cable completed.

